



PMEPA1 Polyclonal Antibody

Catalog No	YP-Ab-00495
Isotype	IgG
Reactivity	Human;Rat;Mouse;
Applications	WB;IHC;IF;ELISA
Gene Name	PMEPA1
Protein Name	Transmembrane prostate androgen-induced protein
Immunogen	The antiserum was produced against synthesized peptide derived from human TMEPA. AA range:101-150
Specificity	PMEPA1 Polyclonal Antibody detects endogenous levels of PMEPA1 protein.
Formulation	Liquid in PBS containing 50% glycerol, 0.5% BSA and 0.02% sodium azide.
Source	Polyclonal, Rabbit,IgG
Purification	The antibody was affinity-purified from rabbit antiserum by affinity-chromatography using epitope-specific immunogen.
Dilution	Western Blot: 1/500 - 1/2000. Immunohistochemistry: 1/100 - 1/300. Immunofluorescence: 1/200 - 1/1000. ELISA: 1/20000. Not yet tested in other applications.
Concentration	1 mg/ml
Purity	≥90%
Storage Stability	-20°C/1 year
Synonyms	PMEPA1; STAG1; TMEPAI; Transmembrane prostate androgen-induced protein; Solid tumor-associated 1 protein
Observed Band	37kD
Cell Pathway	Early endosome membrane; Single-pass membrane protein. Golgi apparatus membrane; Single-pass membrane protein.
Tissue Specificity	Highest expression in prostate. Also expressed in ovary.
Function	domain:The WW-binding motifs mediate interaction with NEDD4.,induction:By androgen.,similarity:Belongs to the PMEPA1 family.,subunit:Interacts with the WW domains of NEDD4.,tissue specificity:Highest expression in prostate. Also expressed in ovary.,
Background	This gene encodes a transmembrane protein that contains a Smad interacting motif (SIM). Expression of this gene is induced by androgens and transforming growth factor beta, and the encoded protein suppresses the androgen receptor and transforming growth factor beta signaling pathways through interactions with Smad proteins. Overexpression of this gene may play a role in multiple types of cancer. Alternatively spliced transcript variants encoding multiple isoforms have been observed for this gene. [provided by RefSeq, Dec 2011],



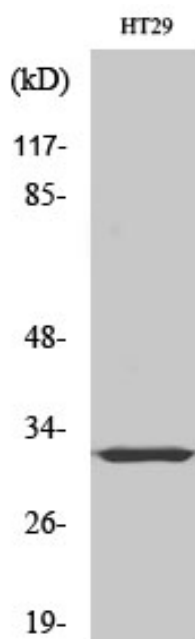
matters needing attention

Avoid repeated freezing and thawing!

Usage suggestions

This product can be used in immunological reaction related experiments. For more information, please consult technical personnel.

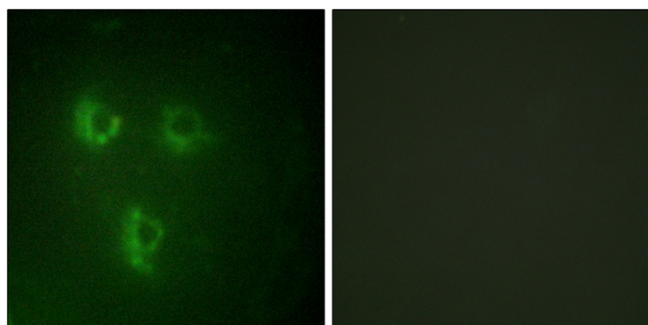
Products Images



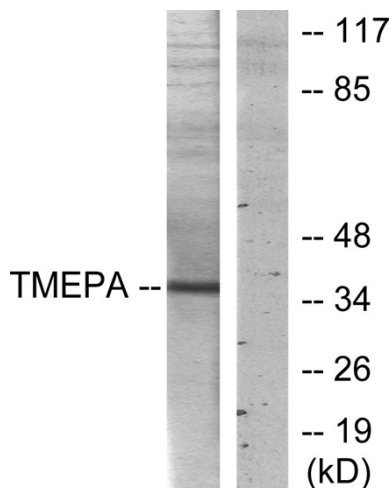
Western Blot analysis of various cells using PMEPA1 Polyclonal Antibody diluted at 1:500



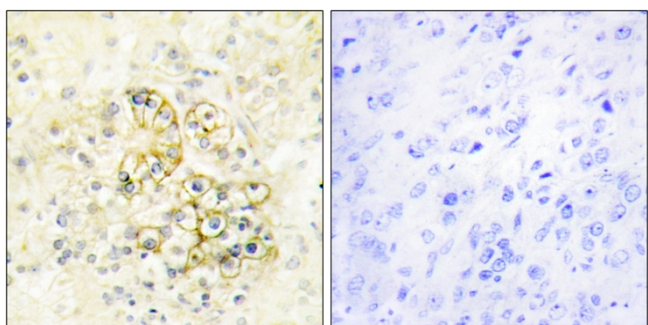
Western Blot analysis of HT29 cells using PMEPA1 Polyclonal Antibody diluted at 1:500



Immunofluorescence analysis of HUVEC cells, using TMEPA Antibody. The picture on the right is blocked with the synthesized peptide.



Immunohistochemistry analysis of paraffin-embedded human prostate tissue, using TMEPA Antibody. The picture on the right is blocked with the synthesized peptide.



Western blot analysis of lysates from HT-29 cells, using TMEPA Antibody. The lane on the right is blocked with the synthesized peptide.